



District Copper Corp Copper Keg Project January 2025

Forward-Looking Statements



Certain statements set forth herein may contain forward-looking statements that involve substantial known and unknown risks and uncertainties. These forward-looking statements are subject to numerous risks and uncertainties, certain of which are beyond the control of the Company, including, but not limited to, risks associated with mineral exploration and mining activities, the impact of general economic conditions, industry conditions, dependence upon regulatory approvals, and the uncertainty of obtaining additional financing. Readers are cautioned that the assumptions used in the preparation of such information, although considered reasonable at the time of preparation, may prove to be imprecise and, as such, undue reliance should not be placed on forward-looking statements. No forward-looking statement can be guaranteed, and actual future results may vary materially. District does not assume any obligation to update any forward-looking statement.

This Presentation is intended for educational and informational purposes only and does not replace independent professional judgment. Statements of fact and opinions expressed are those of the participants individually. The information is not designed to provide financial, tax planning, accounting, investment, business or legal advice in any way whatsoever. The reader should consult with a lawyer, accountant and other professionals in respect of the contents hereof. Furthermore, the information in no way should be construed or interpreted as, or as a part of, an offering of, or a solicitation for the purchase of, securities. Investors are advised to discuss any trading with a registered securities broker or personal finance professional prior to investing.

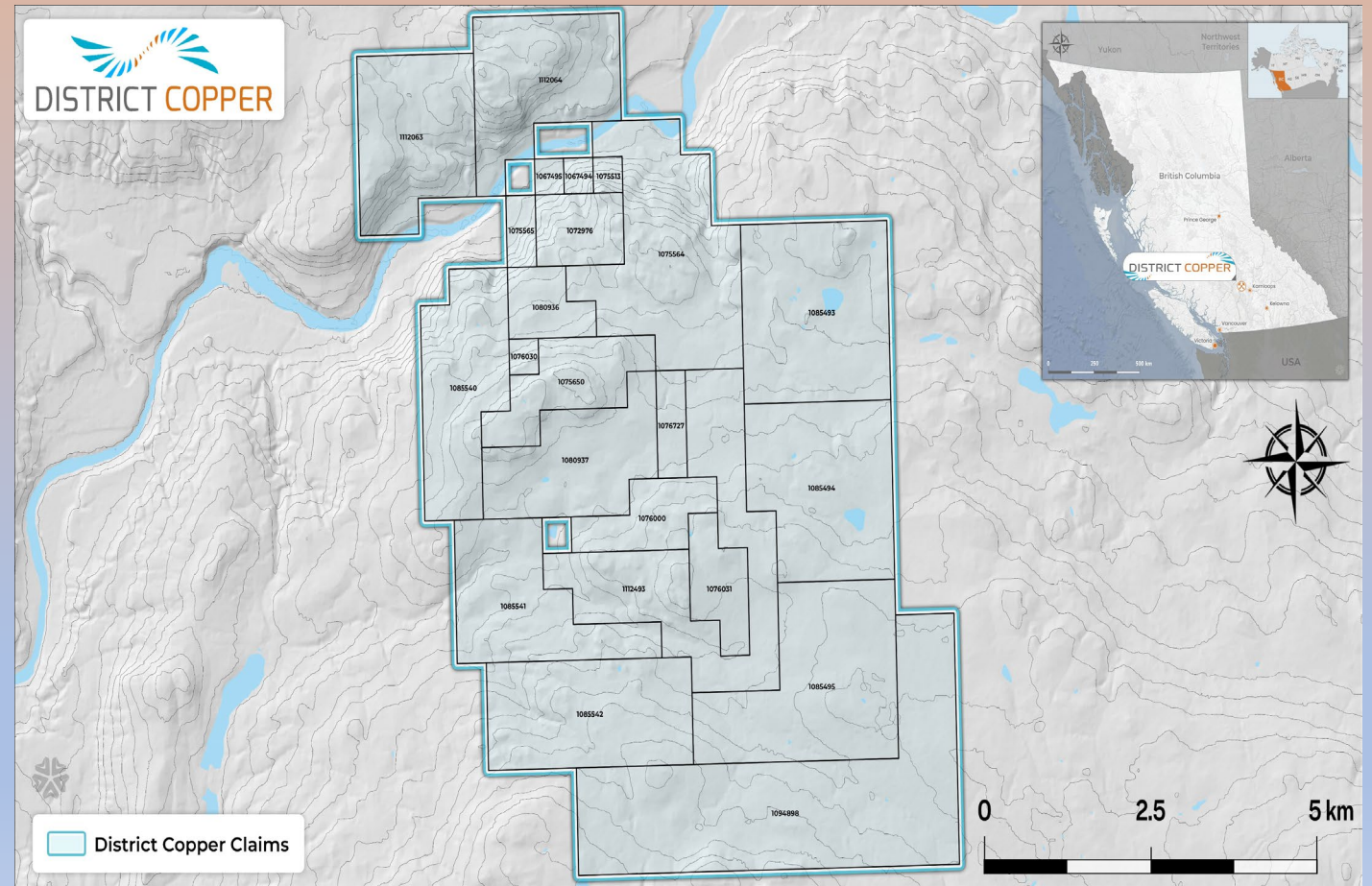
Technical content: Chris M. Healey, P.Geo, Director and Chief Geologist for District, is a Qualified Person as defined by National Instrument 43-101, and has reviewed and approved the technical content of this presentation.

Copper Keg

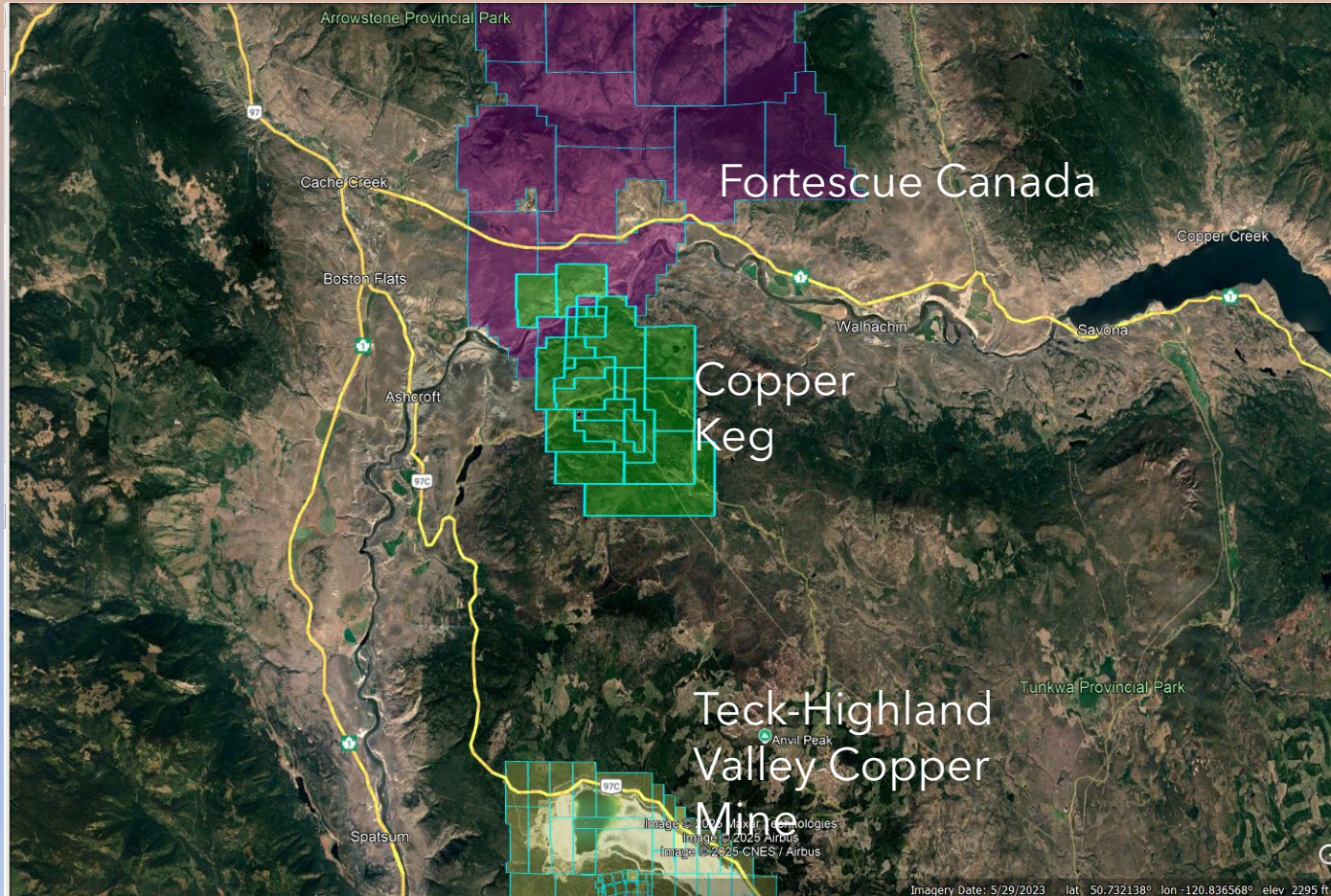


- Located in central British Columbia, in the Kamloops Mining District
- 23 claims totaling 6,628.12 hectares
- Excellent infrastructure with power, gas and rail to the property.
- Teck's Highland Valley Copper operation is located approximately 20 km to the south of Copper Keg, in the same geological setting.

Location

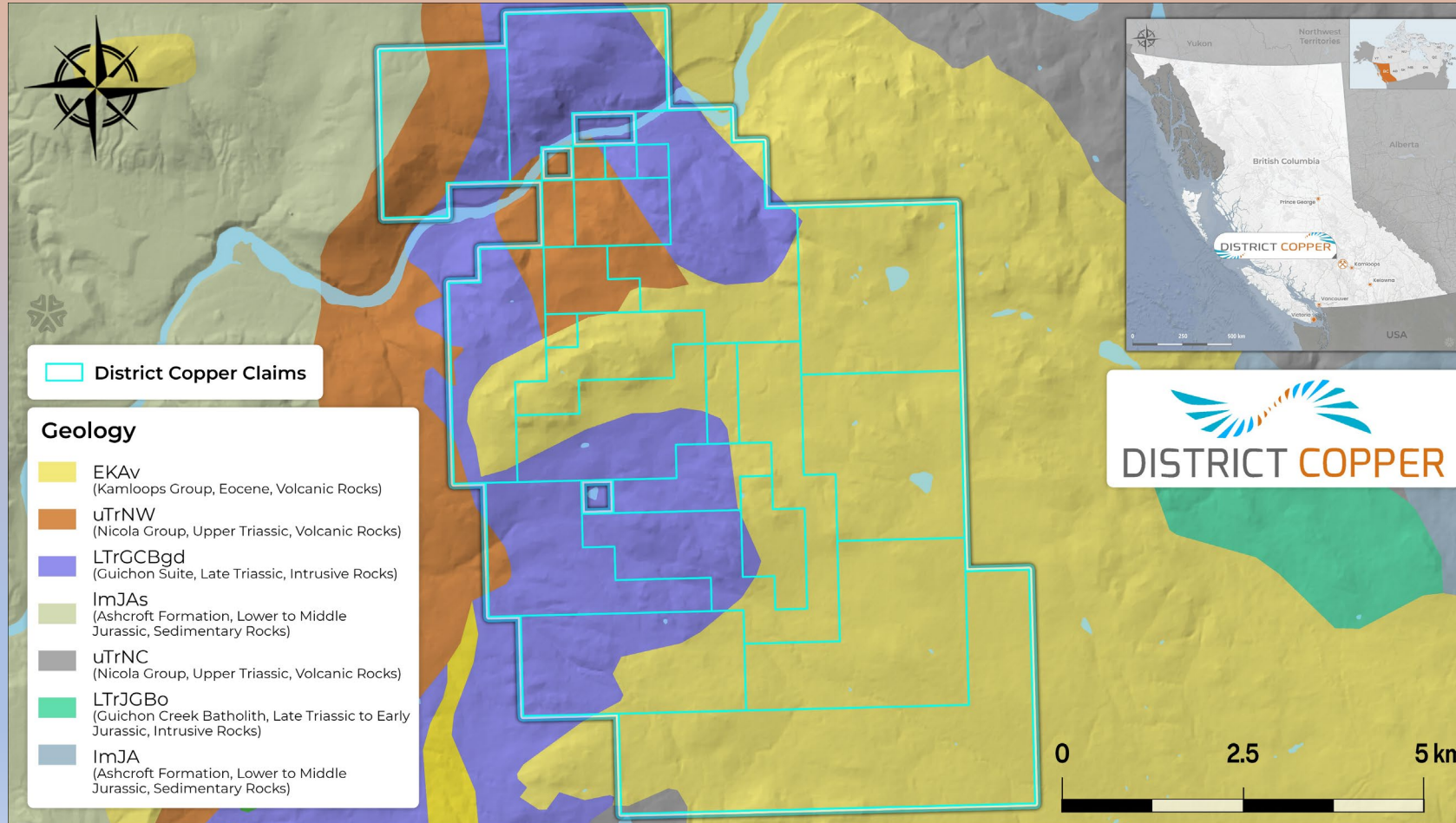


Location



TSX.V DCOP www.districtcoppercorp.com

Regional Geology

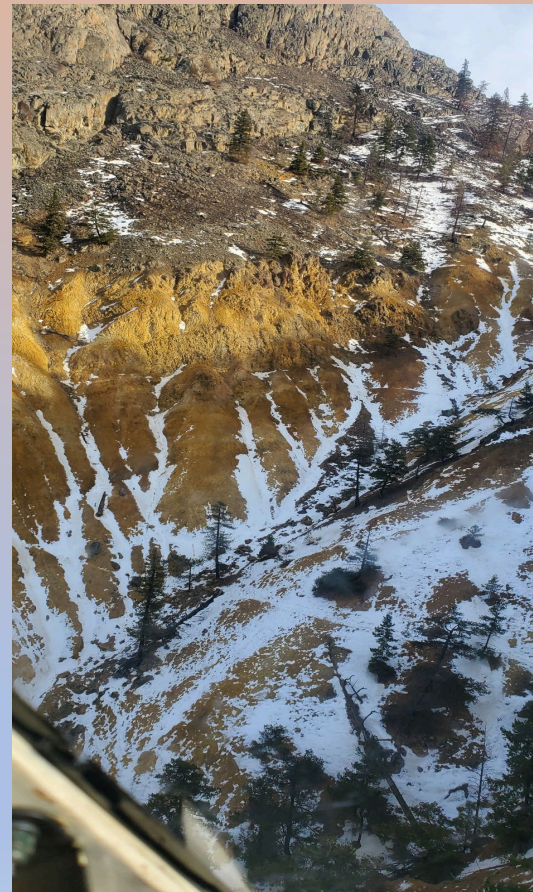


Geological Setting

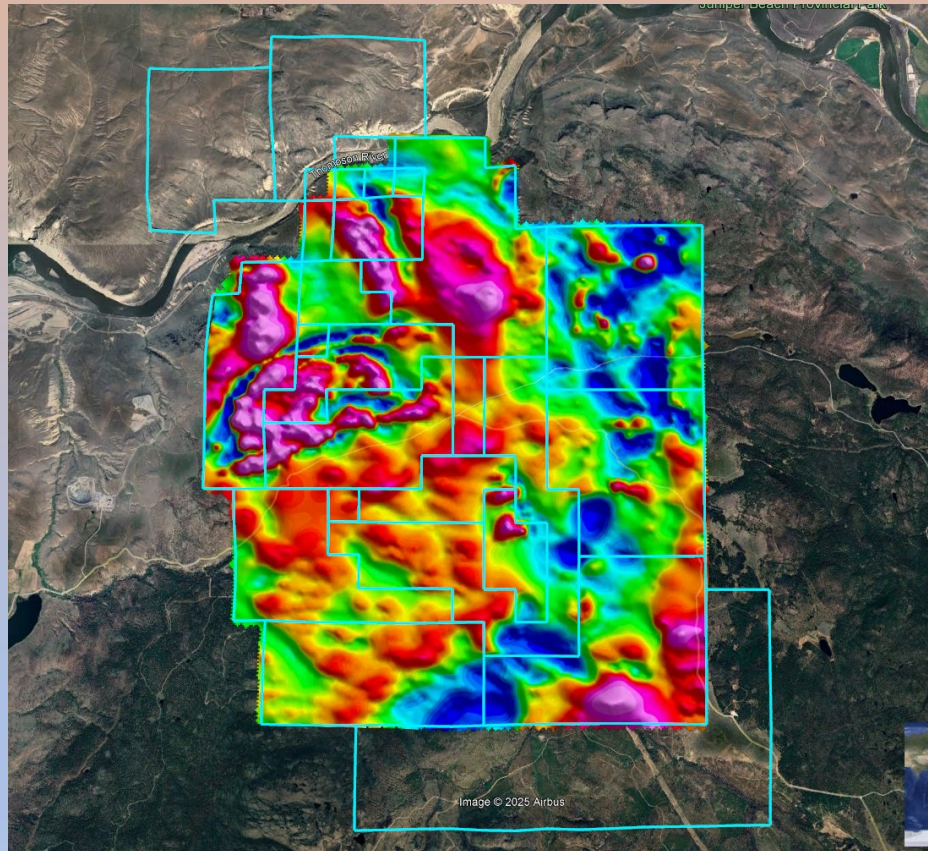


- The property is located at the northwestern edge of the Late Triassic to Early Jurassic Guichon Creek Batholith, which has intruded the Upper Triassic Nicola Group volcanic rocks
- The Nicola Group is cut by a northwest-trending fault, interpreted to be an extension of the regional Barnes Creek fault, along the eastern contact with the Guichon Creek Batholith, resulting in an abundantly fractured gossan zone.
- The western and southern regions of the property have been covered by the Eocene Kamloops Group volcanic rocks.
- A major gossan zone is exposed along a steep gully that extends approximately 850 meters upslope to the southeast and is 150 - 200 meters wide. This gossan zone does not end but is covered to the southeast by overburden and by the Kamloops Group volcanics.

Main Gossan



Airborne Survey



Plan map showing TMI from the 2022 survey. 2 claim blocks on the north and south were acquired in 2024 and will be the focus of the upcoming 2025 survey extension.

6465 IP Survey

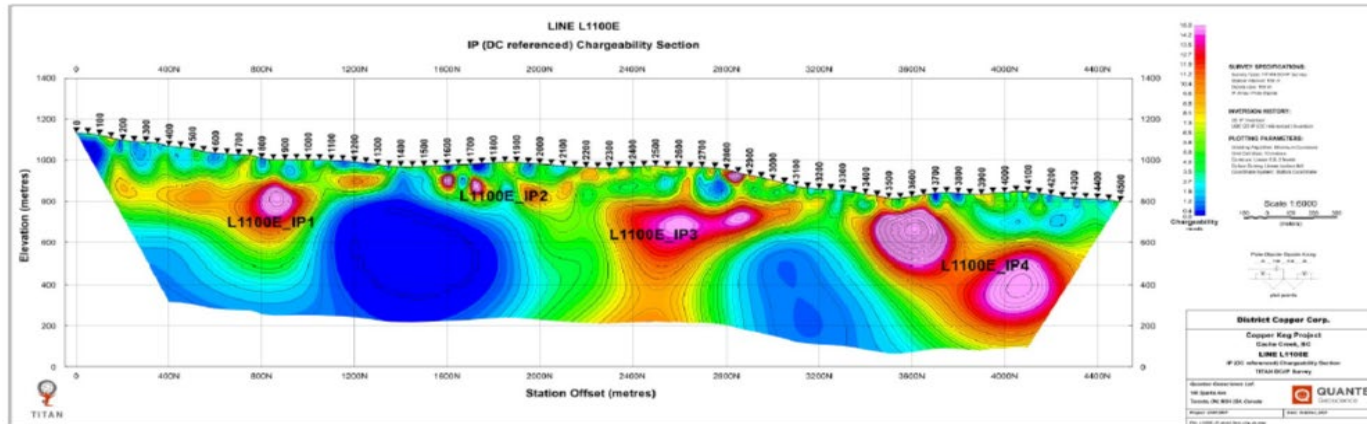


Figure 4-9: IP chargeability (dc_ref) section along L1100E.

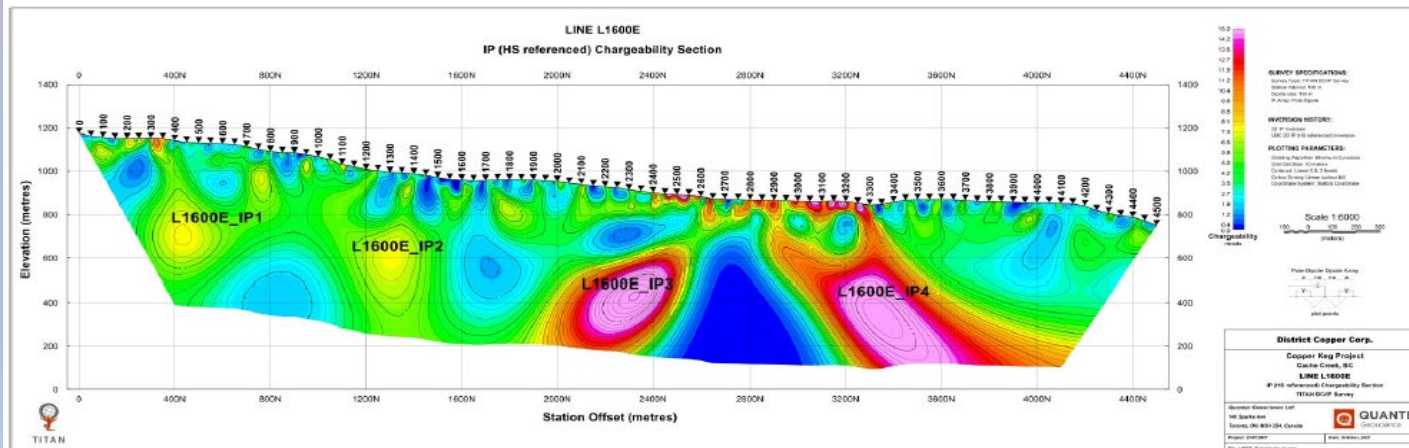


Figure 4-13: IP chargeability (hs_ref) section along L1600E.

5 lines totaling 19.3 line-kilometers of Induced Polarization survey were completed in 2021. Anomalies IP1-4 are moderate to high chargeability and are associated with conductive zones or interfaces between conductive and resistive zones.

Recent Field Work



-
- In April 2021, District initiated an orientation mapping and sampling project.
 - This confirmed the presence of all the rock types previously recorded and identified multiple phases of geochemical alteration consistent with the presence of a deep porphyry system.
 - 19.3 line-kilometers of Induced Polarization survey, with deep penetration, were completed in October 2021.
 - Preliminary interpretation complete, indicating several significant anomalies.
 - 386 line-kilometers of helicopter-borne magnetometer and radiometrics survey completed in February 2022.
 - 2024 sampling of north claim blocks resulting in the discovery of 2 mineralized zones.

Planned 6469 Exploration Program



Expansion of the Airborne magnetic/radiometric survey to cover the recently acquired claim blocks.

An additional 4 lines of Induced Polarization

3D Inversion of IP and Airborne data

Detailed mapping focusing on structure, alteration, and mineralization.

Contact Information



700 - 838 West Hastings St.
Vancouver, BC V6C 0A6
Tel: (604) 363-3506
Email Enquiries: info@districtcoppercorp.com

Jevin Werbes, President and CEO
Email: jwerbes@shaw.ca